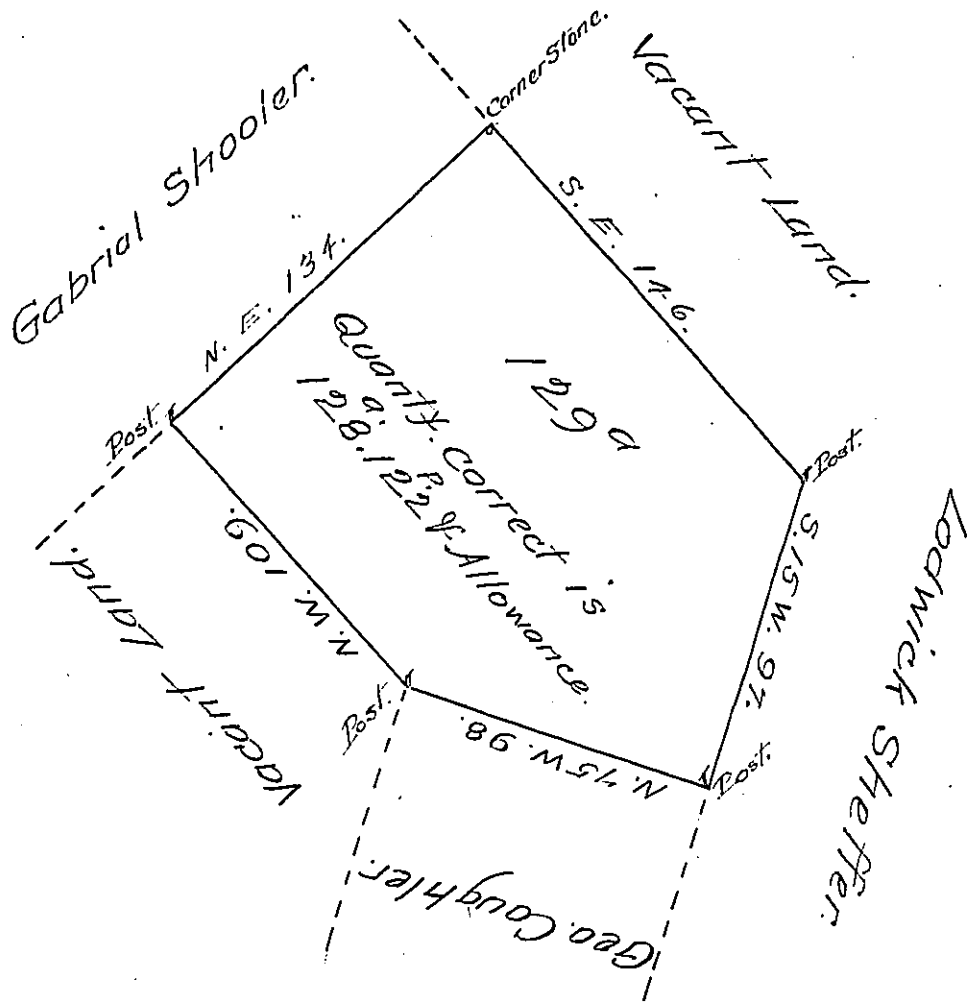


$$\begin{array}{r} 109 \\ 146 \\ \hline 255 \\ 727.5 \\ \hline 134 \\ \hline 5100 \\ 3825 \\ 1275 \\ \hline 17085 \\ 1753 \\ \hline 106 \overline{) 2183800} \overline{) 20602} \\ \underline{6320} \\ 602 \end{array}$$

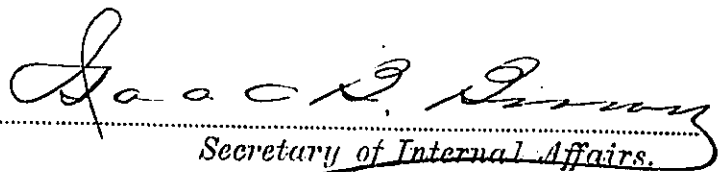
$$\begin{array}{r} 16 \overline{) 20602} \overline{) 128,122} \\ \underline{11} \\ 11 \end{array}$$



By Vertue of a Warrant dated the 17th day of January 1734 Surveyed on the thirtieth Day of ~~October~~ ^{Jan^y} 1734 to William Smith a Tract of land Situate in the Township of Salford in the County of Philad^a. Beginning at a corner Stone of Gabriel Shoolers land thence by Vacant land South East one hundred and forty six perches to a post thence by Vacant land South Fifteen Degrees West Ninety Seven perches to a post thence by land of George Coughler N. seventy five Degrees West Ninety Eight perches to a post a corner of sd. George Coughlers land thence by Vacant land North West one Hundred and Nine perches to a post in y^e line of sd. Gabriel Shoolers land thence by the same North East one hundred & thirty four perches to y^e Place of Beginning Containing one hundred & twenty nine acres with usual allowance

Nich^s. Scull

IN TESTIMONY that the above is a copy of the original remaining on file in the Department of Internal Affairs of Pennsylvania, made conformably to an Act of Assembly approved the 16th day of February, 1833, I have hereunto set my Hand and caused the Seal of said Department to be affixed at Harrisburg, this thirteenth day of September 1906.


 Secretary of Internal Affairs.